



## OFFICES



# SUMMARY

# OFFICE SECTOR IN NUMBERS Q4 2021

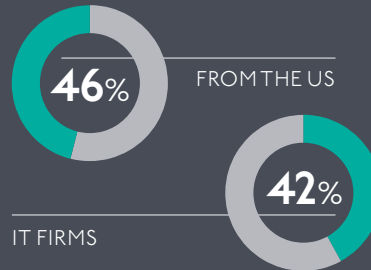
## ACTIVITY

**93,650** SQM

**56** TRANSACTIONS

**82%** IN THE SOUTH  
SUBURBS

## OCCUPIER PROFILE



## LARGEST DEAL

**26,800** SQM

LETTING TO KPMG IN  
HARCOURT SQUARE,  
DUBLIN 2

## SPACE RESERVED

**77,900** SQM

**70%** DUBLIN 1 & DUBLIN 2

**41%** RESERVED IN Q4

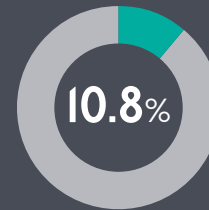
## UNDER CONSTRUCTION

**430,400** SQM

**95%** IN THE CITY

**50%** PRE-LET

## DUBLIN HEADLINE VACANCY RATE



# MEET OUR TEAM

## THE OFFICE TEAM

---



**JAMES NUGENT**  
Senior Director



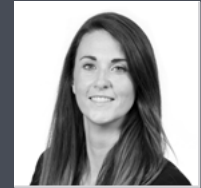
**PAUL HIPWELL**  
Senior Director



**MAEVE FURLONG**  
Divisional Director



**DEBORAH MAHON**  
Divisional Director



**AOIFE O'NEILL**  
Divisional Director



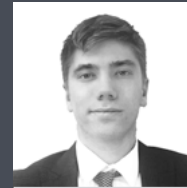
**CONOR LENNON**  
Chartered Surveyor



**AOIFE BRENNAN**  
Senior Director



**AUSRA MARCELYTE**  
Senior Research  
Analyst



**ANDREW O'CONNOR**  
Graduate Surveyor

---

## THE RESEARCH TEAM

### DUBLIN

St. Stephen's Green  
House,  
Earlsfort Terrace,  
Dublin 2, D02 PH42  
**T** +353 (0) 1 638 2700  
**E** dublin@lisney.com

### CORK

1 South Mall,  
Cork, T12 CCN3  
**T** +353 (0) 21 427 5079  
**E** cork@lisney.com

### BELFAST

Montgomery House,  
29-33 Montgomery  
Street,  
Belfast, BT1 4NX  
**T** +44 2890 501501  
**E** belfast@lisney.com