



INVESTMENT

Q4

SUMMARY

INVESTMENT MARKET IN NUMBERS Q4 2021

TURNOVER

€2BN



AVERAGE DEAL SIZE

€31.7m

€36.2m

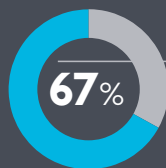
FOR TRANSACTIONS
OVER €1M

LARGEST DEAL

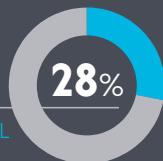
€395m

META'S EUROPEAN
HQ IN BALLSBRIDGE,
DUBLIN 4

LOCATION



TRANSACTIONS
IN DUBLIN



MULTI-LOCATIONAL
TRANSACTIONS

SECTORS

LARGEST EVER QUARTER
FOR INDUSTRIAL
INVESTMENTS AT

€541m

27% OF THE TOTAL
MARKET TURNOVER

PURCHASER ORIGIN

14% INTERNATIONAL
BUYERS

74% DOMESTIC BUYERS

12% CONFIDENTIAL

MEET OUR TEAM

THE INVESTMENT TEAM



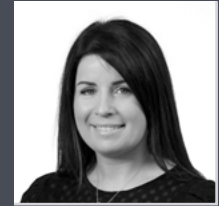
JACKIE FITZPATRICK
Director



JAMES NUGENT
Senior Director



CHRISTOPHER BELTON
Divisional Director



LYNDA GORDON
Divisional Director

THE RESEARCH TEAM



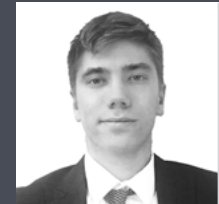
THOMAS BYRNE
Chartered Surveyor



AOIFE BRENNAN
Senior Director



AUSRA MARCELYTE
Senior Research
Analyst



ANDREW O'CONNOR
Graduate Surveyor

DUBLIN

St. Stephen's Green
House,
Earlsfort Terrace,
Dublin 2, D02 PH42
T +353 (0) 1 638 2700
E dublin@lisney.com

CORK

1 South Mall,
Cork, T12 CCN3
T +353 (0) 21 427 5079
E cork@lisney.com

BELFAST

Montgomery House,
29-33 Montgomery
Street,
Belfast, BT1 4NX
T +44 2890 501501
E belfast@lisney.com