



BER B2

Assembly Point

19.20

Trinity Court

TC

Apt. 21 Trinity Court
White Street, Cork

Lisney | Sotheby's
INTERNATIONAL REALTY



Apt. 21 Trinity Court, White Street, Cork

Features

- Excellent Location within city centre
- Master bedroom en-suite
- Gas central heating
- Secure gated residential complex

Lisney Sotheby's International Realty are delighted to present No. 21 Trinity Court to the market offering a well presented two bedroomed apartment within the popular residential development located in the heart of Cork city centre. Constructed in 2004, this apartment located on the first floor extends to approximately 61 sqm (657 sqft) and is within a secure gated complex with peaceful communal areas. The apartment would be an ideal purchase for a first time buyer or those trading down as well as for investment purposes.

The Accomodation extends to a welcoming entrance hall, open plan kitchen/living/dining, two double bedrooms with the master offering an en-suite and finished with a family bathroom. The property is heated by means of gas central heating and the common areas offer lift access. The property has an abundance of amenities close by to include UCC, South Infirmary Hospital, Cork College of Commerce and local restaurants and is well connected by public transport.

Accommodation

Entrance Hallway: Wooden flooring and recessed lighting.

Kitchen/Living/Dining: Located off the entrance hall, this room offers three distinct functions in one with the living/dining area comprising a spacious family area finished with wooden flooring. The kitchen has floor and eye level units and cupboards with appliances to include: oven, hob, extractor fan, sink, dishwasher, fridge/freezer and dishwasher finished with tiled flooring.

Family Bathroom: A three-piece suite to include bath with shower overhead, w.c and wash hand basin, fully tiled.

Bedroom 1: Master bedroom with built in wardrobe and desk finished with carpet flooring.

En-suite: Located off the master bedroom, this bathroom offers a three-piece suite with enclosed shower, w.c. and wash hand basin.

Bedroom 2: A fine double bedroom with built in wardrobe and desk finished with carpet flooring.

Outside: Trinity Court is an excellent private secure gated residential development with a keypad to front and underground carpark. The communal areas are well maintained and offer tranquillity with planting and shrubs. There is lift access in each building as well as staircase. Within walking distance of Cork City centre.

BER Information

BER: B2. BER No: 101546794

EPI: 121.88 kWh/m²/yr.

Eircode

T12 W184



Lisney

Sotheby's
INTERNATIONAL REALTY

OFFICES

29 Dunville Avenue,
Ranelagh, Dublin 6,
D06 K283.
T: 01 662 4511
E: ranelagh@lisneysir.com

51 Mount Merrion Avenue,
Blackrock, Co. Dublin,
A94 W6K7.
T: 01 280 6820

8 Railway Road, Dalkey,
Co. Dublin, A96 D3K2.
T: 01 285 1005

103 Upper Leeson Street,
Ballsbridge, Dublin 4,
D04 TN84.
T: 01 662 4511

St. Stephen's Green House,
Earlsfort Terrace, Dublin 2,
D02 PH42
T: 01 638 2700

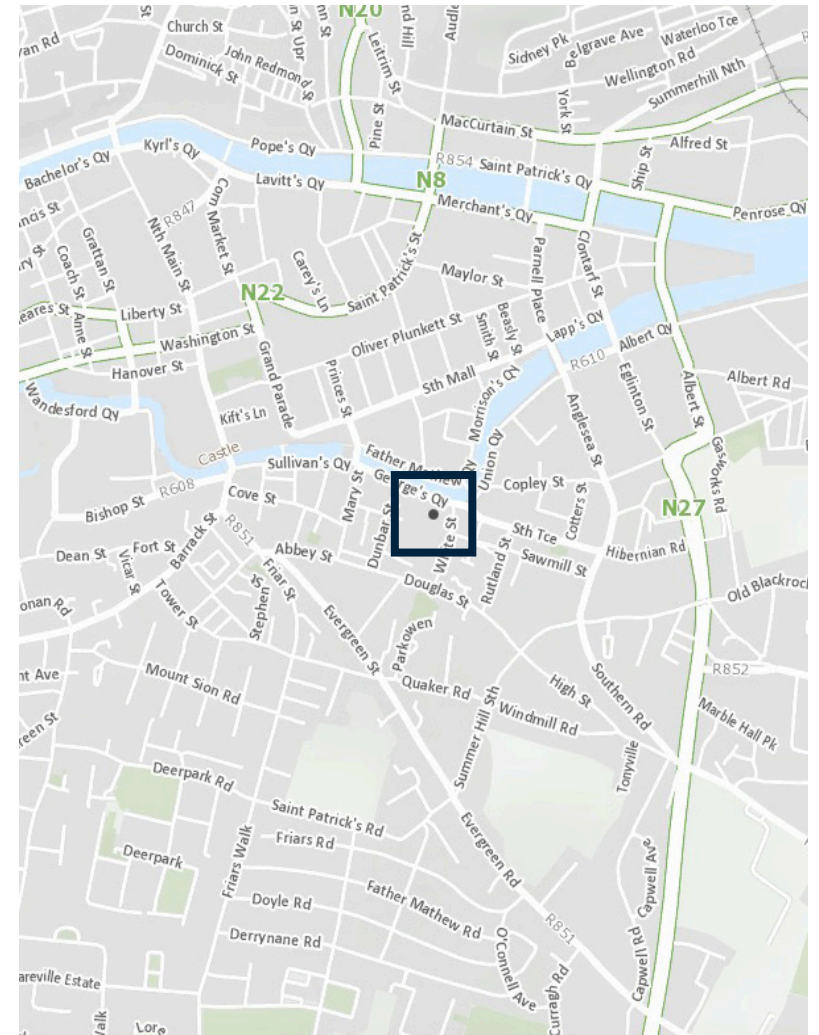
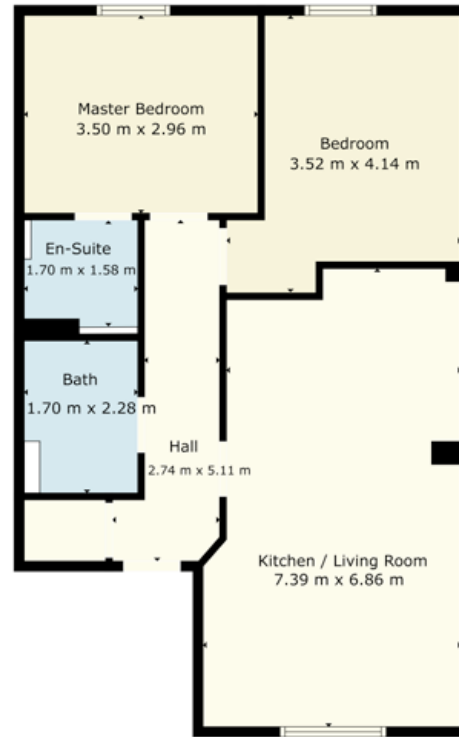
55 South Mall,
Cork, T12 RR44
T: 021 427 8500



lisneysir.com

FLOOR PLANS Not to scale - for identification purpose only.

First Floor



Copyright Ordnance Survey Ireland/Government of Ireland
Licence No. CYAL5016581

Lisney Sotheby's International Realty is an Independently Owned and Operated Company.

Any intending purchaser(s) shall accept that no statement, description or measurement contained in any newspaper, brochure, magazine, advertisement, handout, website or any other document or publication, published by the vendor or by Lisney Sotheby's International Realty, as the vendor's agent, in respect of the premises shall constitute a representation inducing the purchaser(s) to enter into any contract for sale, or any warranty forming part of any such contract for sale. Any such statement, description or measurement, whether in writing or in oral form, given by the vendor, or by Lisney Sotheby's International Realty as the vendor's agent, are for illustration purposes only and are not to be taken as matters of fact and do not form part of any contract. Any intending purchaser(s) shall satisfy themselves by inspection, survey or otherwise as to the correctness of same. No omission, misstatement, misdescription, incorrect measurement or error of any description, whether given orally or in any written form by the vendor or by Lisney Sotheby's International Realty as the vendor's agent, shall give rise to any claim for compensation against the vendor or against Lisney Sotheby's International Realty, nor any right whatsoever of rescission or otherwise of the proposed contract for sale. Any intending purchaser(s) are deemed to fully satisfy themselves in relation to all such matters. These materials are issued on the strict understanding that all negotiations will be conducted through Lisney Sotheby's International Realty. Please note we have not tested any apparatus, fixtures, fittings, or services. Interested parties must undertake their own investigation into the working order of these items. All measurements are approximate and photographs provided for guidance only. PSRA No. 001848.

